



**INTEGRATE  
FOR GOOD**

# CORPORATE PARTNERSHIP OPPORTUNITIES



**ENGAGEMENT GUIDE | 2026**



*All are welcome here...*

**Building Inclusive Workforces.  
Strengthening Communities.  
Driving Measurable Impact.**



## CORPORATE PARTNERSHIP ENGAGEMENT GUIDE

Integrate for Good partners with forward-thinking companies to transform corporate social responsibility into meaningful employee engagement, inclusive workforce development, and measurable community impact.

Through facilitated volunteer experiences, workforce education, and strategic sponsorship opportunities, IFG helps companies:

- Strengthen employee engagement and morale
- Advance disability inclusion and belonging initiatives
- Support ERGs and Capability Networks
- Enhance retention through purpose-driven culture
- Contribute to measurable social impact aligned with ESG goals

***This is more than sponsorship.***

This is a partnership that strengthens your people and your community.

# 3 WAYS TO Partner with Us



## Team Volunteer Experiences

(On-Site or At Your Office)

- Energize employees through meaningful 2-hour or half-day experiences that strengthen morale, connection, and culture
- Bring inclusion, belonging, and disability confidence to life through visible action
- Align your values with measurable community impact that strengthens brand and CSR goals



## ERG & Capability Network Engagement

- Give your ERGs a mission-aligned experience that brings disability inclusion and belonging to life
- Offer employees meaningful opportunities to engage, learn, and connect through shared purpose
- Create memorable moments that deepen empathy, spark conversation, and strengthen workplace culture



## Sponsorship & Community Impact Partnership

- Turn your company's values into visible, mission-aligned community impact
- Strengthen employer brand and stakeholder trust through meaningful local investment
- Advance disability inclusion and workforce development through sponsorship that changes lives



## **ABOUT INTEGRATE FOR GOOD**

Founded in 2019, Integrate for Good addresses the social determinants of health by empowering students and adults with diverse abilities to contribute their talent through inclusive volunteerism, community leadership, and meaningful employment.

The Integrate for Good model is based on clinical doctoral research in social capital building conducted at Temple University. This research informs us that individuals who are connected to their communities are more likely to have a safe place to live, and are more likely to be employed. Additionally, they are more likely to be mentally and physically healthy and experience a greater quality of life. The Integrate for Good model is designed to address the social barriers faced by students and adults with disabilities using targeted strategies for increasing opportunity through three specific channels:

**EMPOWERMENT, CONNECTION, AND EDUCATION.**

# REAL IMPACT. REAL PARTNERSHIP.

"Volunteering at Integrate for Good is not only helping students and adults with disabilities learn and grow their job skills by teaching the group how to make the sleeping mats but the sleeping mats go to those experiencing homelessness in the community. That is the definition of people helping people! Not only was it a great opportunity to network with other employees from across the company all while bonding over a common goal of helping those in need. Collaborating with Integrate for Good is a wonderful opportunity to support their mission to empower these individuals to exercise their leadership skills, promote volunteerism, and remove the stigma of disabilities in the workplace." - Jaime Hoagey, Sr. Agreements Specialist

"The sleeping mat volunteer event at Integrate for Good was a great opportunity for our team to spend time together outside of work while supporting a great cause. The highlight for me was our team getting an appreciation of the need in our community to support local young adults in our area as they transition from high school into adult life and all the great work Integrate for Good does to support them. It provided our team some perspective and inspired us to think about how we and our company can further serve our community." - Joe Ruggiero, Merck



"We wanted to have an interactive experience that reinforced our team culture and executed a key Colorcon value which is to commit to the principles of corporate social responsibility (CSR) for the benefit of the community where we operate. The experience went far beyond our expectations. We were educated to the local needs of the community, introduced to a committed set of volunteers, and overjoyed with the mat-weaving activity that created amazing teamwork. This is truly a very deserving organization that Colorcon is happy to support in our community."



# Why Choose Us?

---

✔ **Community Engagement**  
Impact the communities where you operate, demonstrating your commitment to the neighborhoods where you do business.

✔ **Networking Opportunities**  
Foster connections with other like-minded businesses and individuals who share a passion for social good.

✔ **Employee Engagement**  
According to Deloitte research, company volunteer events boost workplace morale better than a company-sponsored happy hour!

✔ **Brand Exposure**  
Appeal to a broader customer base and cultivate improved loyalty among socially-conscious consumers.

✔ **Employee Retention**  
Snapshot Employee Research found that 71% of employees say it's imperative or very important to work where the culture is supportive of giving and volunteerism.

✔ **Corporate Social Responsibility (CSR)**  
Make your CSR priorities come alive by investing in initiatives, engaging your teams, and contributing to sustainable development goals.

✔ **Access to Untapped Potential**  
Access a pool of talent that is often overlooked or underutilized. Investing in individuals with disabilities and neurodiversity enables you to harness untapped potential and drive innovation within your organization.

✔ **Long-Term Impact on Society**  
Contribute to positive societal change by promoting equality, accessibility, and acceptance of individuals with disabilities and neurodiverse traits in the workplace and beyond.

✔ **Tax Benefits**  
Access corporate tax benefits, deductions, and financial incentives.



# MEANINGFUL *Connections*

Our Corporate Partnership Program is designed to forge meaningful connections with businesses that share our commitment to inclusion, belonging, community impact and economic opportunity.

Your corporate values are the heart and soul of your business. We invite you to partner with us to strengthen your teams, boost your company's morale, and make a meaningful difference in the local communities where you do business.



MAKE AN IMPACT, BECOME A CORPORATE PARTNER

# What Companies **GAIN**

After a volunteer event, employees report:

- **Greater empathy, awareness, and confidence** around neurodiversity and disability inclusion
- **Stronger team cohesion** built through shared purpose and hands-on collaboration
- More **authentic cross-department relationships** that continue beyond the event
- A **renewed sense of pride, energy, and purpose** among employees
- A **meaningful employee experience** that reflects well on your culture and leadership
- **Stronger connection** between your company's **values** and your employees' day-to-day experience



## Our **IMPACT**...



**10,000+**

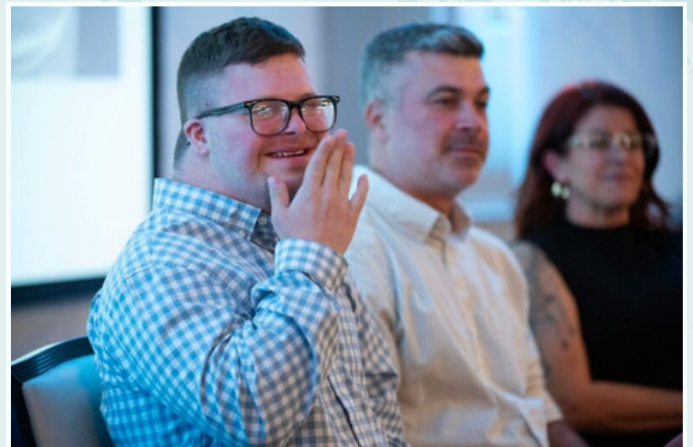
Volunteer Hours



**2,800+**

People Engaged

*...grows with you!*



# EXPLORE Sponsorships

## Community Heroes Celebration

	TITLE	COMMUNITY HERO	LEADERSHIP AWARD	RACE	PARTNER	FRIEND	ALLY	HORSE
Celebration Tickets	10	8	6	4	2	2	0	0
Reserved Table	X	X	-	-	-	-	-	-
Exclusive Sponsorship Benefits	On Stage Welcome / Opening Remarks	Co-present Community Hero Award	Co-present Leadership Awards	Recognition for One Horse Race				Name a Horse
Logo on Table Tents & Video Loop	X	X	X	X	X	X	-	-
Full Color Ad in Program	Full Page + Logo on Cover	Full Page	Full Page	Half Page	Quarter Page	Mention	Mention	Mention
Logo on Website with Link	X	X	X	X	X	X	-	-
Social Media Recognition	X	X	X	X	-	X	X	-
<b>INVESTMENT</b>	<b>\$10,000</b>	<b>\$7,500</b>	<b>\$5,000</b>	<b>\$2,500</b>	<b>\$1,000</b>	<b>\$500</b>	<b>\$250</b>	<b>\$50</b>



# The EITC Opportunity

In Pennsylvania, the **Educational Improvement Tax Credit (EITC)** program offers businesses an impactful way to direct their state tax dollars to initiatives that improve education and empower students.

If your company is already enrolled in the EITC program, you can designate your tax credits to support **Integrate for Good's Empowerment Lab**, a unique opportunity for high school students with disabilities to develop essential life, leadership, and employment skills. This program provides scholarships that enable students to access hands-on, confidence-building experiences, preparing them for success beyond high school. Students create a dynamic webpage, innovatively showcasing their ability through photography and videography to employers, colleges, universities and community organizations.

If your company is not yet participating in the EITC program, we encourage you to explore this simple process and consider how your support can change lives. To learn more, email [bev@interateforgood.org](mailto:bev@interateforgood.org), or visit the EITC program page at [dced.pa.gov/programs/educational-improvement-tax-credit-program-eitc/](https://dced.pa.gov/programs/educational-improvement-tax-credit-program-eitc/).

**Together, we can create a brighter,  
more inclusive future!**

# IMPACT STORY



## THE PRODUCE AISLE OF THE COLLEGEVILLE WEGMANS FOOD MARKET

For fourteen years, John has been a familiar face, carefully stocking the produce and making sure the bananas look just right. He takes pride in his work, and it shows.

This fall, John added something new to his schedule.

John just completed **Integrate For Good's Opening Doors on Campus** program at **Ursinus College**. Over the semester, he built confidence and practiced skills including initiation, problem-solving, and goal-setting. These skills support success at work and confidence in everyday life. On campus, John is a learner, a peer, and part of a college community.

A few weeks ago, I ran into John while shopping at Wegmans. After introducing him to my daughter, we started down the next aisle. Then I heard him call out, "Hey, Bev. There's someone I want you to meet."

He confidently introduced me to a fellow co-worker and said, "This is Bev. We're in a program together at Ursinus College." I watched the moment land. His teammate's expression shifted from surprise to genuine admiration. "Wow, man. That's awesome," he said.

In that moment, John became so much more than the person who stocks the bananas.



"This is what I see again and again through Integrate for Good. People with disabilities are often underestimated by others and sometimes by themselves.

When we create opportunities to learn, grow, and belong in meaningful community settings like a college campus, something shifts. People begin to see themselves differently, and the world starts to see them differently, too."

**Dr. Bev Weinberg, Founder of Integrate For Good**

Start here...

## Are You Ready to Stand Out for What You Stand For?

Whether you want to engage your team of three or 153, we have a variety of opportunities that align with your priorities.



**Dr. Bev Weinberg**

Founder &  
Executive Director

- ✉ [bev@integrateforgood.org](mailto:bev@integrateforgood.org)
- ☎ 484-854-1375
- 📍 478 E. Main St., Suite 1  
Collegeville, PA 19426
- 🌐 <https://integrateforgood.org>

Gold  
Transparency  
2024

**Candid.**